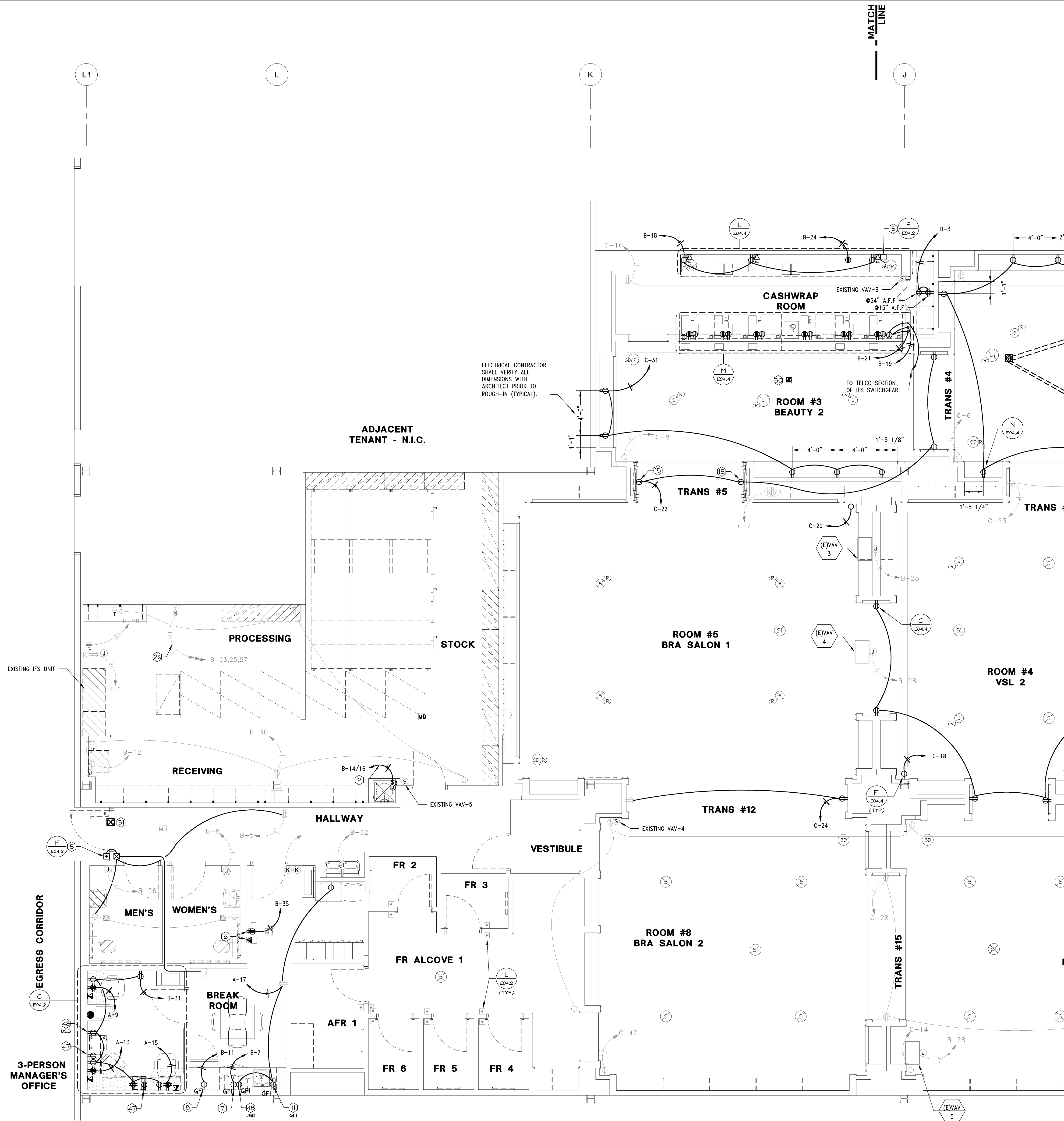


"VERIFY ALL FIELD CONDITIONS PRIOR TO BID"



- 1) EXTEND 1/2" TELEPHONE CONDUIT FROM SERVICE ENTRANCE AT DEMISING WALL TO TELEPHONE/DATA SECTION OF IFS ENCLOSURE.
- 2) FURNISH AND INSTALL 3/4" CONDUIT WITH PULLWIRE FROM HVAC SECTION OF IFS ENCLOSURE TO ABOVE CEILING. COORDINATE EXACT REQUIREMENT WITH MECHANICAL CONTRACTOR.
- 3) IFS ENCLOSURE. CONDUITS STUBBED INTO IFS ENCLOSURE SHALL BE INSTALLED IN A CLEAN AND NEAT MANNER. ANCHOR IFS ENCLOSURE ACCORDING TO MANUFACTURER'S SPECIFICATIONS AND LOCAL CODES IN SEISMIC AREAS. REFER TO SPECIFICATIONS AND RISER DIAGRAM FOR MORE INFORMATION. MAINTAIN MINIMUM WORKING CLEARANCE IN THE DIRECTION OF ACCESS TO LIVE PARTS OF ELECTRICAL EQUIPMENT PER NEC TABLE 110.26(A).
- 4) TELEPHONE OUTLET IN WALL. INSTALL EMPTY 3/4" CONDUIT WITH PULLWIRE, BACK TO TELCO SECTION OF IFS ENCLOSURE. TELEPHONE WIRE AND #114C JACK FOR TWO LINE TELEPHONE BY OTHERS. MOUNT AT 48" AFF, EXCEPT AS NOTED ON PLANS.
- 5) INSTALL DELIVERY BUZZER SYSTEM AS SHOWN ON DRAWINGS. L&S&C SHALL FURNISH COMPLETE EDWARDS DELIVERY BUZZER SYSTEM COMPLETE WITH TRANSFORMER, BUZZERS, LOUVERED COVERPLATES, AND PUSHBUTTON (WEATHERPROOF FOR OUTSIDE LOCATIONS). ELECTRICAL CONTRACTOR SHALL FURNISH AND INSTALL NECESSARY JUNCTION BOXES, CONDUIT, AND WIRE TO COMPLETELY INSTALL DELIVERY BUZZER SYSTEM. JUNCTION BOXES SHALL BE MOUNTED VERTICALLY.
- 6) PROVIDE DEDICATED ISOLATED GROUND DUPLEX RECEPTACLE AND DATA BOX AT 48" AFF FOR ALL SYSTEM.
- 7) 20 AMP MICROWAVE RECEPTACLE @ 42" AFF WHEN COUNTER IS PRESENT, 18" FOR ALL OTHER CASES. IF PLAN LOCATION IS NOT ACCEPTABLE, IMMEDIATELY CONTACT L&S&C PROJECT MANAGER FOR DIRECTION.
- 8) 20 AMP RECEPTACLE @ 18" AFF FOR REFRIGERATOR OR VENDING MACHINE. IF PLAN LOCATION IS NOT ACCEPTABLE, IMMEDIATELY CONTACT L&S&C PROJECT MANAGER FOR DIRECTION.
- 9) JUNCTION BOX FOR WATER HEATER ELECTRICAL CONNECTION. FURNISH AND INSTALL CODE REQUIRED DISCONNECT SWITCH. COORDINATE EXACT LOCATION AND RELATED REQUIREMENTS WITH PLUMBING CONTRACTOR PRIOR TO WORK COMMENCEMENT.
- 10) ELECTRICAL WHIP TYPE CONNECTION FOR HAND DRYER TO BE MOUNTED AT 21'-5 5/8" AFF AND 3'-3/8" IN FROM EDGE OF UNIT. COORDINATE EXACT LOCATION MANUFACTURER INSTRUCTIONS PRIOR TO WORK COMMENCEMENT.
- 11) GFI DUPLEX RECEPTACLE AND COVERPLATE SHALL MATCH WALL COLOR, MOUNT AT 42" AFF.
- 12) JUNCTION BOX AND 1/2" CONDUIT FOR ELECTRONIC ACCESS LOCK. VERIFY CONDUIT SIZE AND PATH WITH SECURITY CONTRACTOR.
- 13) KEYPAD FOR PAGING SYSTEM, MOUNTED AT 48" AFF, ON WALL AND CONNECTED TO MODEM PANEL. REFER TO RESPONSIBILITY SCHEDULE FOR INSTALLATION.
- 14) SAW CUT/CORE DRILL AND PATCH FLOOR SLAB AS REQUIRED FOR UNDERSLAB CONDUIT.
- 15) JUNCTION BOX CENTERED IN THE TRANSITION TO HARD WIRE BEAUTY TRANSITION FOCAL MOUNT BEAUTY TRANSITION FOCAL SHALLOW (HFS) AT 9" AFF. MOUNT BEAUTY TRANSITION FOCAL FLAT (HFF) AT 15" AFF. COORDINATE WITH ARCHITECTURAL DRAWINGS.
- 16) AIR DEVICE OR ACCESS PANEL BY GENERAL CONTRACTOR TO BE USED AS ACCESS TO EQUIPMENT LOCATED ABOVE CEILING AND/OR FOR TRANSMISSION OF ALARM SOUND. CONTRACTOR SHALL BE RESPONSIBLE TO ENSURE THAT A MINIMUM UNOBSTRUCTED FREE AREA OF 3" VERTICALLY AND 3" HORIZONTALLY IN ALL DIRECTIONS AROUND EQUIPMENT IS MAINTAINED TO ALLOW FOR INSTALLATION AND MAINTENANCE OF EQUIPMENT. IF THIS FREE AREA CANNOT BE OBTAINED, IMMEDIATELY CONTACT L&S&C'S PROJECT MANAGER FOR DIRECTION.
- 17) JUNCTION BOX AND CODE REQUIRED DISCONNECT SWITCH FOR MOTORIZED ROLL-UP GRILLE ELECTRICAL CONNECTION. COORDINATE EXACT LOCATION AND RELATED REQUIREMENTS WITH L&S&C PROJECT MANAGER PRIOR TO WORK COMMENCEMENT.
- 18) ELECTRICAL CONTRACTOR SHALL COORDINATE EXACT LOCATIONS OF BARREL KEY SWITCHES BEFORE WORK COMMENCEMENT. ELECTRICAL CONTRACTOR SHALL CONNECT KEY SWITCH TO CONTROL BOARD AND DOOR LOCK INTERLOCK.
- 19) ENCLOSURE WITH SENSORMATIC POWER PACK AND 24 HOUR DEDICATED DUPLEX RECEPTACLE MOUNTED ON VERTICAL FACE OF SOFFIT ABOVE CEILING OR BELOW PLATFORM. ALARM SHALL BE POSITIONED SO IT CAN NOT BE SEEN THROUGH RETURN GRILLE. COORDINATE SENSORMATIC FREQUENCY WITH ADJACENT TENANT SENSORMATIC SYSTEMS.
- 20) DUPLEX RECEPTACLES FOR EACH ILLUMINATED LETTER OF PINK SIGN, PROVIDED BY OWNER, INSTALLED BY ELECTRICAL CONTRACTOR. SEE ARCHITECTURAL DRAWINGS FOR EXACT LOCATIONS.
- 21) DUPLEX RECEPTACLE MOUNTED IN LIGHT COVE. BOTH STRANDS OF LEDS SHALL PLUG INTO RECEPTACLE. VERIFY EXACT LOCATIONS WITH L&S&C PROJECT MANAGER PRIOR TO WORK COMMENCEMENT.
- 22) RECEPTACLE FOR STOREFRONT LED LIGHTING TO BE MOUNTED AT TOP OF WALL, 3" BELOW STRUCTURAL ANGLE (REFER TO ARCHITECTURAL SECTIONS). RECEPTACLE SHALL BE POWERED FROM STOREFRONT DIMMING SYSTEM POWER MODULE AND LABELED ACCORDING TO DIMMING ZONE. ZONE 1 (GENERAL STOREFRONT LED). REFER TO STOREFRONT DIMMING SYSTEM RISER DIAGRAM AND SCHEDULE ON SHEET E05.01 FOR MORE INFORMATION.
- 23) JUNCTION BOX FOR LUTRON GRAFIK EYE DIMMER/MODULE.
- 24) VIDEO WALL. SEE ARCHITECTURAL DRAWINGS FOR EXACT LOCATIONS.
- 25) MOUNT RECEPTACLE VERTICALLY AT 15" AFF AND CENTERED IN WALL. SEE ARCHITECTURAL DRAWINGS FOR LOCATION. RECEPTACLE MAY BE SHOWN AWAY FROM WALL FOR CLARITY.
- 26) REFER TO ELECTRICAL EQUIPMENT DATA ON SHEET E05.01 FOR CONDUIT AND WIRE SIZE.
- 27) 4"x4" JUNCTION BOX MOUNTED AT 60" AFF WITH 1 1/4" CONDUIT (WITH BUSHING) TO CEILING FOR BURGLAR ALARM. VERIFY EXACT LOCATION WITH L&S&C PROJECT MANAGER PRIOR TO WORK COMMENCEMENT.
- 28) INSTALL WALL MOUNTED MOTION DETECTOR AT REAR EXIT AND NEXT TO BURGLAR ALARM AT 7' AFF. VERIFY EXACT LOCATIONS WITH L&S&C PROJECT MANAGER PRIOR TO WORK COMMENCEMENT.
- 29) KEYPAD FOR SECURITY SYSTEM, MOUNTED AT 54" AFF, ON WALL, ON HANDLE SIDE OF NON-SALES DOOR LEADING TO SALES AREA. AND 3/4" CONDUIT FROM JUNCTION BOX TO ABOVE CEILING.
- 30) INSTALL CEILING MOUNTED MOTION DETECTOR IN EACH STOREFRONT ROOM WITH AN ENTRANCE AND IN FRONT OF EVERY CASHWRAP. VERIFY EXACT COLOR AND LOCATIONS WITH L&S&C PROJECT MANAGER PRIOR TO WORK COMMENCEMENT.
- 31) DOOR CONTACT. GENERAL CONTRACTOR SHALL FURNISH AND INSTALL JUNCTION BOX AND 3/4" CONDUIT FROM ABOVE CEILING TO 6" FROM DOOR, ALIGNED WITH TOP OF DOOR FOR SWING DOORS.
- 32) INSTALL CURTAIN WALL MOUNTED MOTION DETECTOR AT EACH ENTRY/ROLLING GRILLE. VERIFY EXACT LOCATIONS WITH L&S&C PROJECT MANAGER PRIOR TO WORK COMMENCEMENT.
- 33) FIRE ALARM CONTROL PANEL WITH BATTERY BACK-UP AND MINIMUM OF 6 ZONES FURNISHED AND INSTALLED BY FIRE ALARM CONTRACTOR. FIRE ALARM CONTROL PANEL SHALL BE TIED IN WITH EXISTING WALL CENTRAL FIRE ALARM SYSTEM. CONTRACTOR SHALL COORDINATE FINAL SEQUENCES OF OPERATION WITH LANDLORD ENGINEER.
- 34) FIRE ALARM DEVICE FURNISHED AND INSTALLED BY FIRE ALARM CONTRACTOR, WIRED BY ELECTRICAL CONTRACTOR. REFER TO SPECIFICATIONS FOR MOUNTING HEIGHTS.
- 35) HOME RUN TO IP CABINET LOCATED IN NON-SALES AREA.
- 36) KEYPAD FOR IP CAMERA SYSTEM, MOUNTED WITH TOP AT 48" AFF AT LATCH SIDE OF BACK EXIT DOOR, AND WITH 1/2" CONDUIT UP WALL TO JUNCTION BOX ABOVE CEILING.
- 37) INSTALL BUTTON FOR IP CAMERA SYSTEM ON WALL ADJACENT TO ALL SYSTEM AT 48" A.F.F. COORDINATE EXACT LOCATION WITH L&S&C'S PROJECT MANAGER.
- 38) ROUTE 1/2" CONDUIT BACK TO IP CABINET.
- 39) PROVIDE DUPLEX CEILING RECEPTACLE FOR LUMISHEET, CENTER ON WINDOW, 6" BACK FROM SOFFIT LINE, WITH LONG EDGE PARALLEL TO STOREFRONT. PROVIDE DEDICATED LIGHTING CIRCUIT CONTROLLED BY STOREFRONT LIGHTING ZONE.
- 40) PROVIDE SURFACE MOUNTED JUNCTION BOX WITH TOGGLE SWITCH DISCONNECT AT ACCESSIBLE VOID SIDE OF WALL FOR PORTAL SIGN BOX. REFER TO ARCHITECTURAL SECTION FOR MOUNTING HEIGHT.
- 41) PROVIDE JUNCTION BOX WITH TOGGLE SWITCH DISCONNECT FOR SIGN POWER. REFER TO ARCHITECTURAL DETAILS FOR EXACT LOCATION.
- 42) PROVIDE JUNCTION BOX WITH TOGGLE SWITCH DISCONNECT FOR PINK OUTFITTING CENTER LIGHTS. REFER TO ARCHITECTURAL DETAILS FOR EXACT LOCATION.
- 43) PROVIDE CEILING RECEPTACLE FOR CABINET LIGHTING. REFER TO ARCHITECTURAL DETAILS FOR EXACT LOCATION.
- 44) GFI DUPLEX RECEPTACLE AND COVERPLATE SHALL BE BLACK, MOUNT HORIZONTALLY AT 40" AFF. COORDINATE WITH ARCHITECTURAL ELEVATIONS AND DETAILS FOR EXACT PLACEMENT.
- 45) PROVIDE JUNCTION BOX AND FINAL CONNECTION FOR RECESSED HAND DRYER. MOUNT JUNCTION BOX AT 46" A.F.F., CONCEALED WITHIN THE RIGHT HAND SIDE OF THE WALL OPENING.
- 46) PROVIDE DUPLEX RECEPTACLE FOR UNDER CABINET LIGHTING. REFER TO DETAIL C/E04.02 FOR MOUNTING HEIGHT AND CIRCUITING INFORMATION.
- 47) USB CHARGER RECEPTACLE AND COVERPLATE SHALL BE WHITE. PROVIDE DEEP BACK BOX TO FIT RECEPTACLE PER MANUFACTURER REQUIREMENTS. FOR RECEPTACLES MOUNTED NEAR BREAK ROOM SINK, POWER RECEPTACLE ON THE LOAD SIDE OF ADJACENT GFCI PROTECTED RECEPTACLE.
- 48) MONITORING SENSOR MOUNTED AT 48" AFF. SENSOR TO BE ROUTED BACK TO MONITOR CIRCUIT BOARD. PROVIDE JUNCTION BOX NEXT TO IPS PANEL FOR MONITOR CIRCUIT BOARD. PROVIDE AND INSTALL 24 VOLT 150VA TRANSFORMER COMPATIBLE WITH TRANE TRACER MP503 WITH CODE REQUIRED DISCONNECT SWITCH.
- 49) RECEPTACLE SHALL BE MOUNTED AT 28" AFF, CENTERED BEHIND VIGNETTE FIXTURE. GC SHALL BUNDLE AND BIND LAMP CORD TIGHT.

M-Engineering
750 Brookside Blvd.
Westerville, Ohio 43081
phone: 614.839.4639
fax: 614.839.2222
www.mengineering.us.com

010500133

VICTORIA'S SECRET

QUAIL SPRINGS MALL

SPACE NO. 119

2501 WEST MEMORIAL RD.

OKLAHOMA CITY, OK 73134

PROJECT INFORMATION:

REVISIONS:

REQUIRED BY: _____ DATE: _____

ELITE CONSTRUCTION GROUP
LAKE JACKSON, TX
PHONE: 979.288.0715
NOTE: THESE PRINTS HAVE BEEN
REDUCED BY 50 PERCENT SCALE
WILL BE 50 PERCENT OF WHAT IS
NOTED ON PLANS

DATE ISSUED: 05.30.2014

DESIGNED BY: ASB

DRAWN BY: ASB

CHECKED BY: DFG

ELECTRICAL POWER PLAN

DRAWING NUMBER: E02.1

010500133

VICTORIA'S SECRET

QUAIL SPRINGS MALL

SPACE NO. 119

2501 WEST MEMORIAL RD.

OKLAHOMA CITY, OK 73134

PROJECT INFORMATION:

REVISIONS:

REQUIRED BY: _____ DATE: _____

ELITE CONSTRUCTION GROUP
LAKE JACKSON, TX
PHONE: 979.288.0715
NOTE: THESE PRINTS HAVE BEEN
REDUCED BY 50 PERCENT SCALE
WILL BE 50 PERCENT OF WHAT IS
NOTED ON PLANS

DATE ISSUED: 05.30.2014

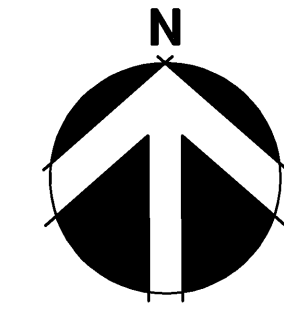
DESIGNED BY: ASB

DRAWN BY: ASB

CHECKED BY: DFG

ELECTRICAL POWER PLAN

DRAWING NUMBER: E02.1



1/4" = 1'-0"

A